

[UPGRADE GARAGE®](#) |
 [PRODUCTS](#) |
 [SHOPPING TOOLS](#) |
 [GIFT CERTIFICATES](#) |
 Keyword Search

[TIRES](#) |
 [Shop By Vehicle](#) |
 [Shop By Size](#) |
 [Brands](#) |
 [Winter](#) |
 [Test Results](#) |
 [Survey Results](#) |
 [Tire Reviews](#) |
 [Installation](#)

2004 Chrysler Crossfire Coupe |
 [Save This Vehicle](#) |
 [Select New Vehicle](#) |
 Other Products for this Vehicle

Tire Test Results

Testing the New Michelin Pilot Sport A/S Plus

[Test Report](#) |
 [Test Result Charts](#)

August 28, 2008

Tires tested:

- [Bridgestone Potenza RE960AS Pole Position \(Ultra High Performance All-Season 225/45R17\)](#)
- [Goodyear Eagle F1 All-Season \(Ultra High Performance All-Season 225/45R17\)](#)
- [Michelin Pilot Sport A/S Plus \(Ultra High Performance All-Season 225/45R17\)](#)
- [Pirelli P Zero Nero M+S \(Ultra High Performance All-Season 225/45R17\)](#)

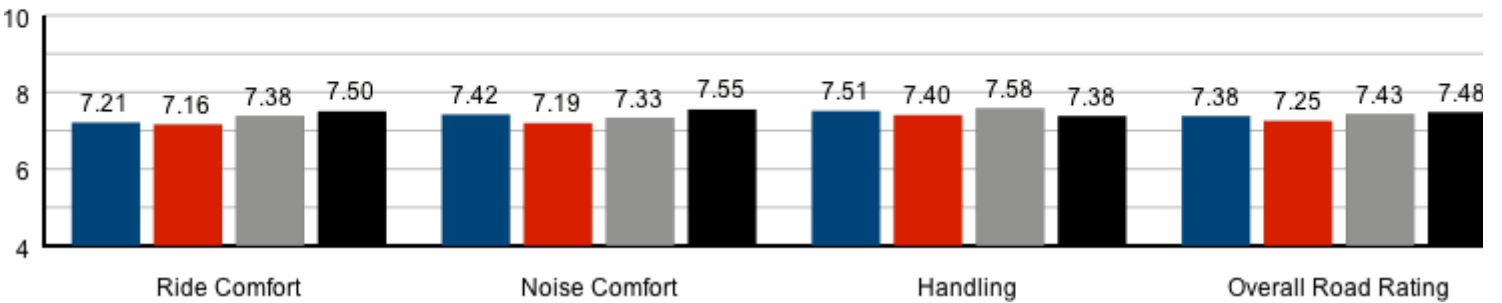
Vehicles used:

2008 BMW E90 328i Coupe

Real World Road Ride Ratings

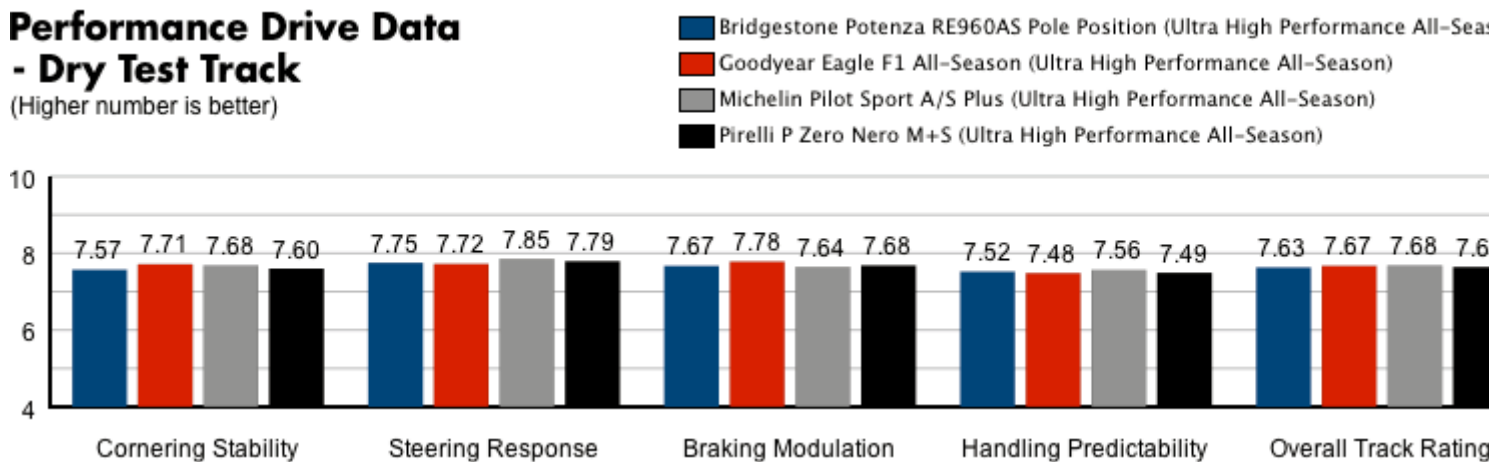
(Higher number is better)

- Bridgestone Potenza RE960AS Pole Position (Ultra High Performance All-Season)
- Goodyear Eagle F1 All-Season (Ultra High Performance All-Season)
- Michelin Pilot Sport A/S Plus (Ultra High Performance All-Season)
- Pirelli P Zero Nero M+S (Ultra High Performance All-Season)



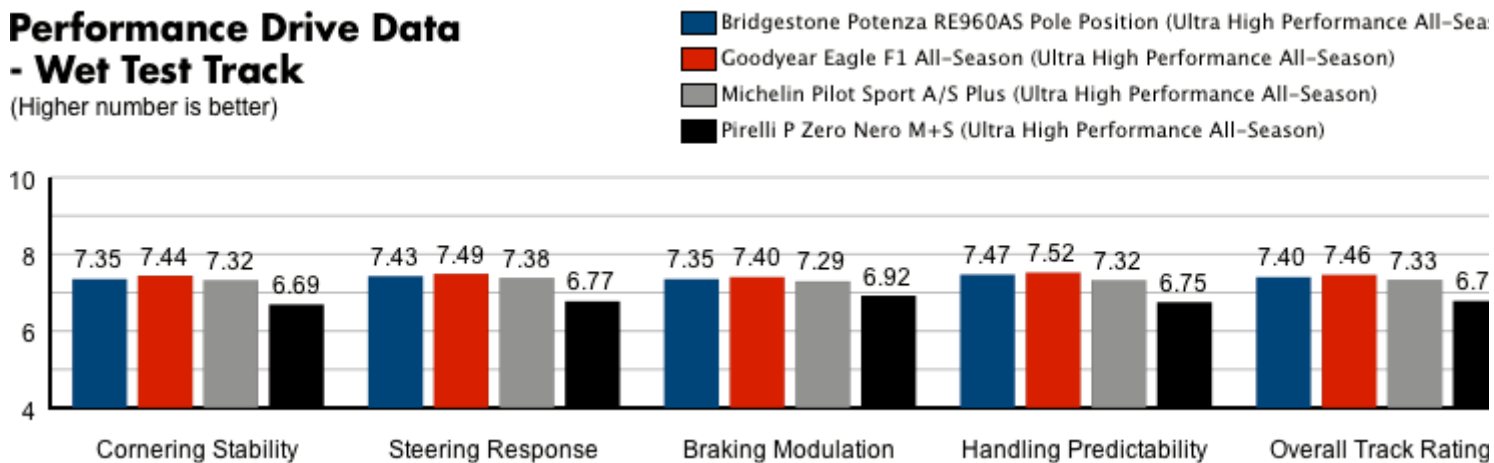
Performance Drive Data - Dry Test Track

(Higher number is better)



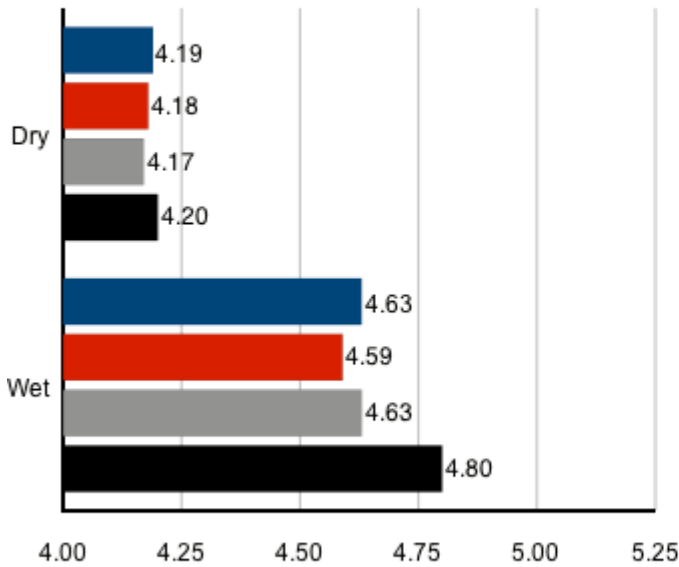
Performance Drive Data - Wet Test Track

(Higher number is better)



Slalom Time (Seconds)

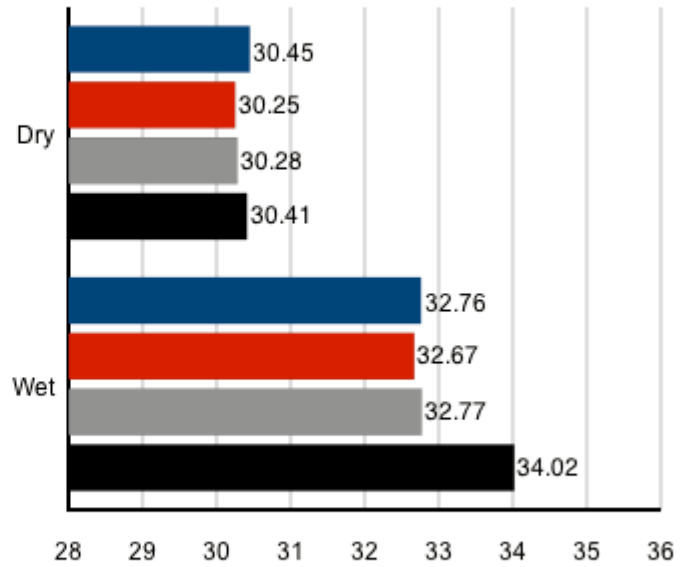
(Lower number is better)



■ Bridgestone Potenza RE960AS Pole Position (Ultra High Performance All-Season)
■ Michelin Pilot Sport A/S Plus (Ultra High Performance All-Season)

Lap Time (Seconds)

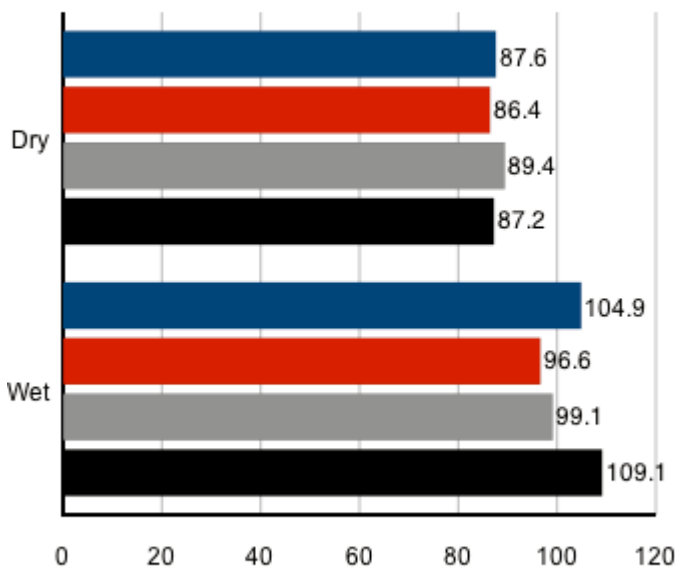
(Lower number is better)



■ Goodyear Eagle F1 All-Season (Ultra High Performance All-Season)
■ Pirelli P Zero Nero M+S (Ultra High Performance All-Season)

Stopping Distance (Feet) 50-0 mph

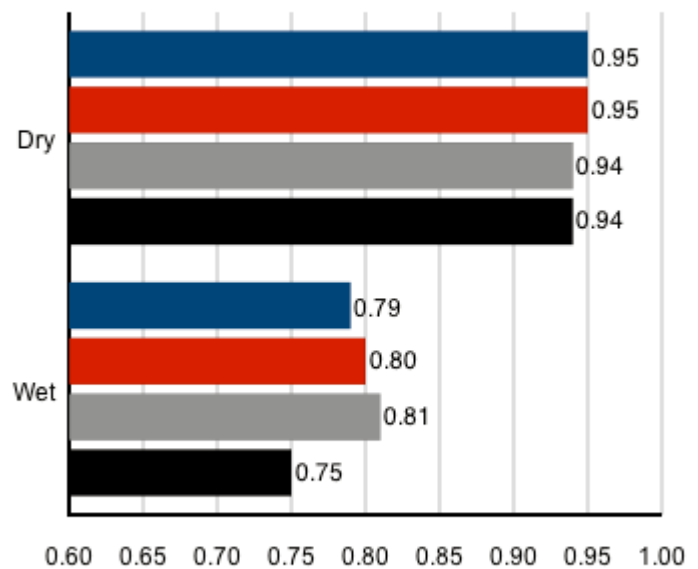
(Lower number is better)



■ Bridgestone Potenza RE960AS Pole Position (Ultra High Performance All-Season)
■ Michelin Pilot Sport A/S Plus (Ultra High Performance All-Season)

Average Cornering (g-Force)

(Higher number is better)



■ Goodyear Eagle F1 All-Season (Ultra High Performance All-Season)
■ Pirelli P Zero Nero M+S (Ultra High Performance All-Season)

[Test Report](#)

Test Result Charts

[Home](#) > [Tires](#) > [Tests](#) > Testing the New Michelin Pilot Sport A/S Plus



Why Tire Rack

- [The Experts](#)
- [Installation](#)
- [Contact Info](#)

Ordering Info

- [Using this Site](#)
- [Catalog](#)
- [Returns/Refunds](#)

Downloads

- [Our Magazine Ad](#)
- [Tire Rack Owner's Manual](#)

More Info

- [Email Sign-up](#)
- [Privacy Pledge](#), [Terms of Use \(PDF\)](#)
- [Affiliate Program](#)